

Torc-Pac 60

APPLICATION CHART

SPM vs STROKE / TONNAGE

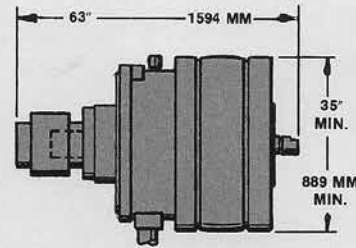
RATED AT 1/2" (OR 12.5 MM)
ABOVE BOTTOM DEAD CENTER

THE CHART BELOW MAKES IT POSSIBLE TO DETERMINE THE SIZE TORC-PAC FOR MOST PRESS DRIVE APPLICATIONS. THE STROKES PER MINUTE (SPM) ARE BASED ON MAXIMUM PERMISSIBLE FLYWHEEL SPEED.

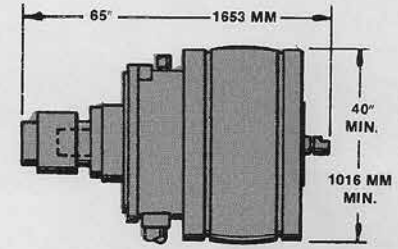
PRESS STROKE	500			600			700		
	IN.	MM	SPM	IN.	MM	SPM	IN.	MM	SPM
10	250	76	69	64	58	55			
12	300	69	63	58	53				
14	350	64	59	54	50				
16									

SPM FOR METRIC TONNES

SPM FOR U.S. TONS

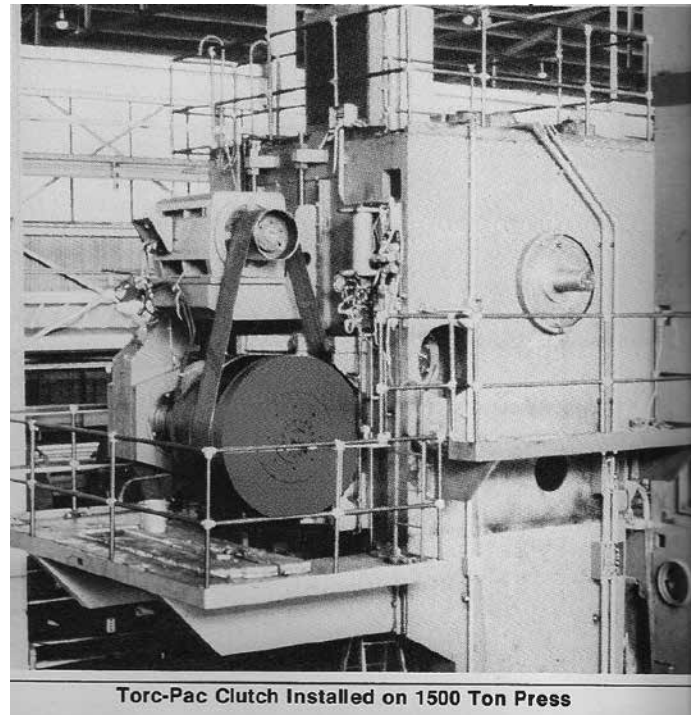
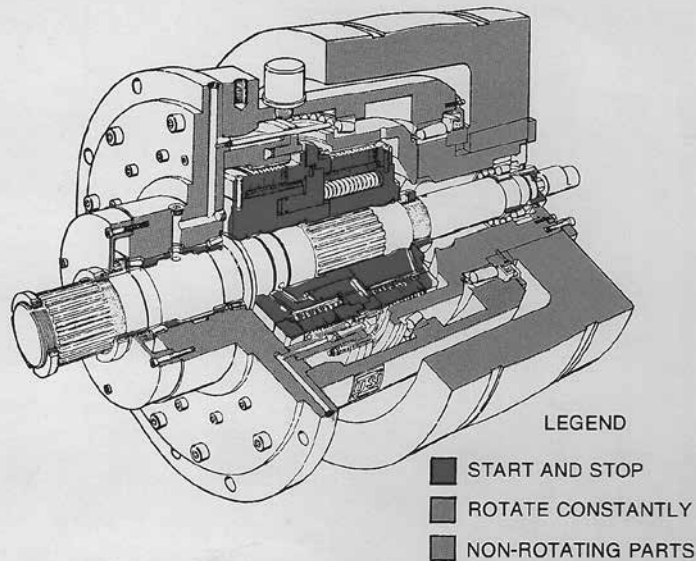


MODEL #225
RPM 700
TORQUE 26,300 FT. LBS
TORQUE 3636 KGM



MODEL #250
RPM 550
TORQUE 53,610 FT. LBS
TORQUE 7412 KGM

Torc-Pac Clutch and Brake Unit for Large Power Presses



SPM vs STROKE/TONNAGE

RATED AT 1/2" (OR 12.5 MM) ABOVE BOTTOM DEAD CENTER THE CHART BELOW MAKES IT POSSIBLE TO DETERMINE THE SIZE TORC-PAC FOR MOST PRESS DRIVE APPLICATIONS. THE STROKES PER MINUTE (SPM) ARE BASED ON MAXIMUM PERMISSIBLE FLYWHEEL SPEED.
PRESS STROKE

IN.	MM	500	600	700	800	900	1000	1250											
10	250	76	69	64	58	55	50	48	43	42	39	38	35	78	71	31	28	62	57
12	300	69	63	58	53	50	45	43	39	39	35	35	32	71	64	28	25	57	52
14	350	64	59	54	49	45	42	40	37	36	33	32	29	66	60	26	23	52	47
16	400	60	54	50	45	43	39	37	34	33	30	30	27	61	55	24	22	49	44
18	450	56	51	47	42	40	36	35	32	31	28	28	25	57	52	22	20	46	41
20	500	53	48	44	40	38	35	33	30	30	27	27	24	54	49	21	19	43	39
22	550	50	46	42	38	36	33	32	29	28	25	25	23	51	47	20	18	41	37
24	600	48	44	40	37	35	31	30	27	27	24	24	22	49	45	19	18	39	36
26	650	46	42	39	35	33	30	29	26	26	23	23	21	47	43	19	17	38	34
28	700	44	40	37	34	32	29	28	25	25	22	22	20	45	41	18	16	36	33
30	750	43	39	36	33	31	28	27	24	24	22	22	20	44	40	17	16	35	32
32	800	42	38	35	32	30	27	26	24	23	21	21	19	43	39	17	15	34	31
34	850	40	37	34	31	29	26	25	23	22	20	20	18	41	37	16	15	33	30
36	900	39	36	33	30	28	25	24	22	22	20	20	18	40	36	16	14	32	29
38	950	38	35	32	29	27	25	24	22	21	19	19	17	39	35	15	14	31	28
40	1000	37	34	31	28	27	24	23	21	21	19	19	17	38	34	15	13	30	28
42	1050	36	33	30	27	26	23	23	21	20	18	18	16	37	34	14	13	29	27
44	1100	35	32	29	27	25	23	22	20	20	18	18	16	36	33	14	13	29	26

STROKES/MIN



SPM vs STROKE/TONNAGE

RATED AT 1/2" (OR 12.5 MM) ABOVE BOTTOM DEAD CENTER THE CHART BELOW MAKES IT POSSIBLE TO DETERMINE THE SIZE TORC-PAC FOR MOST PRESS DRIVE APPLICATIONS. THE STROKES PER MINUTE (SPM) ARE BASED ON MAXIMUM PERMISSIBLE FLYWHEEL SPEED. PRESS STROKE

1500		2000				2500				3000				4000		5000			
25	23	52	47	19	17	39	35	15	14	31	28	13	12	26	24	19	18	16	14
23	21	47	43	17	16	35	32	14	13	28	26	12	11	24	21	18	16	14	13
21	20	44	40	16	15	33	30	13	12	26	24	11	10	22	20	16	15	13	12
20	18	41	37	15	14	30	28	12	11	24	22	10	9	20	18	15	14	12	11
19	17	38	35	14	13	29	26	11	10	23	21	9	8	19	17	14	13	11	10
18	16	36	33	13	12	27	25	11	10	22	20	-	-	18	16	14	12	-	-
17	15	34	31	13	11	26	23	10	9	21	19	-	-	17	16	13	12	-	-
16	15	33	30	12	11	25	22	10	9	20	18	-	-	16	15	12	11	-	-
15	14	32	29	12	11	24	21	9	8	19	17	-	-	16	14	12	11	-	-
15	13	30	27	11	10	23	21	9	8	18	16	-	-	15	14	11	10	-	-
14	13	29	27	11	10	22	20	9	8	18	16	-	-	15	13	11	10	-	-
14	13	28	26	10	9	21	19	8	8	17	15	-	-	14	13	11	10	-	-
13	12	27	25	10	9	21	19	8	7	16	15	-	-	14	12	10	9	-	-
13	12	27	24	10	9	20	18	8	7	16	15	-	-	13	12	10	9	-	-
13	12	26	24	10	9	19	18	8	7	16	14	-	-	13	12	10	9	-	-
12	11	25	23	9	8	19	17	7	7	15	14	-	-	13	11	9	9	-	-
12	11	25	22	9	8	18	17	7	7	15	13	-	-	12	11	9	8	-	-
12	11	24	22	9	8	18	16	7	6	14	13	-	-	12	11	9	8	-	-

STROKES/MIN