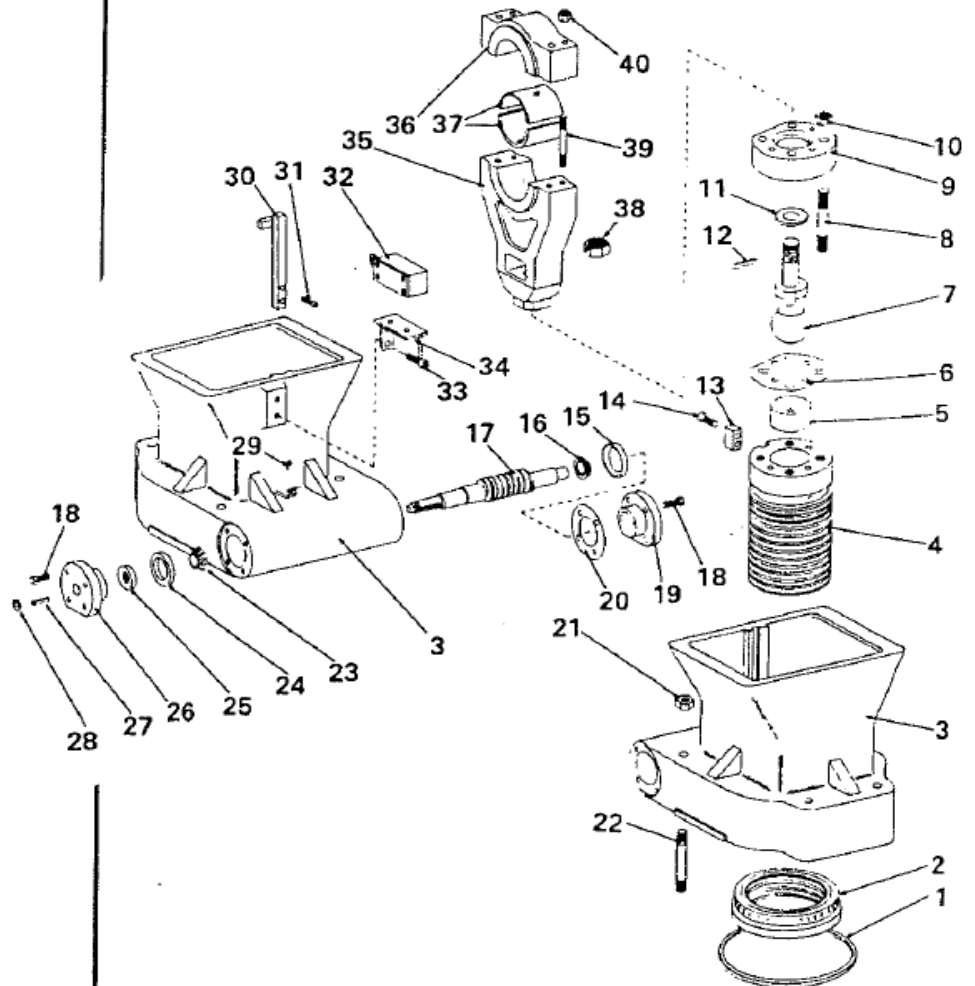


A-13-D

BARREL ADJUSTMENT ASSEMBLY

BALL SCREW

1. Neoprene Oil Seal
2. Worm Nut
3. Barrel
4. Adjusting Screw
5. Ball Seat
6. Shim
7. Ball Connection Screw
8. Ball Cap Stud
9. Ball Cap
10. Nut
11. Washer (Used only with Steel Connection)
12. Cotter Pin
13. Guide Key
14. Guide Key Screw
15. Bearing Cup
16. Bearing Cone
17. Worm Shaft
18. Bearing Cover Screw
19. Bearing Cover
20. Shim
21. Nut
22. Barrel Mounting Stud
23. Bearing Cone
24. Bearing Cup
25. Oil Seal
26. Bearing Cover
27. Barrel Adjusting Gear Key
28. Snap Ring
29. Oil Plug
30. Limit Switch Stop
31. Stop Screw
32. Limit Switch
33. Bracket Screw
34. Limit Switch Bracket
35. Connection
36. Connection Cap
37. Connection Bushings
38. Connection Ball Nut
39. Connection Cap Stud
40. Nut



765