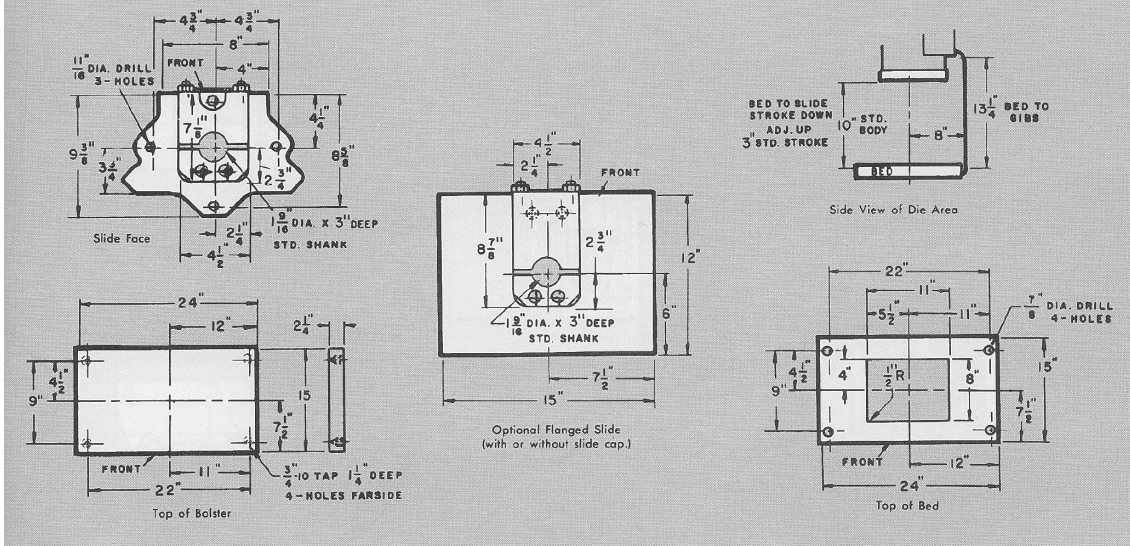


Torc-Pac 32

DIE SPACE DRAWING 32 TON TORC-PAC



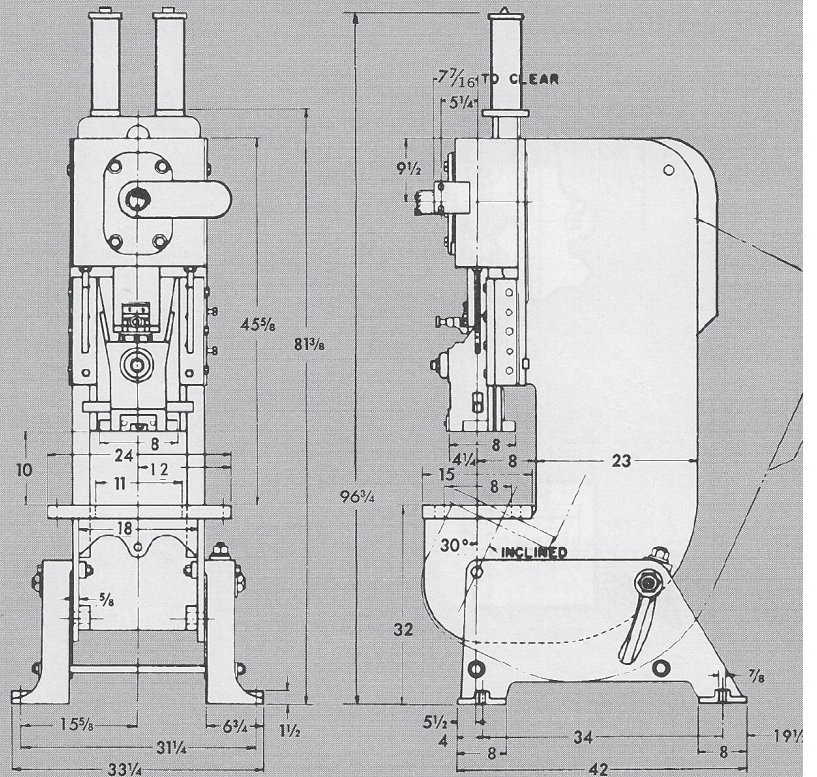
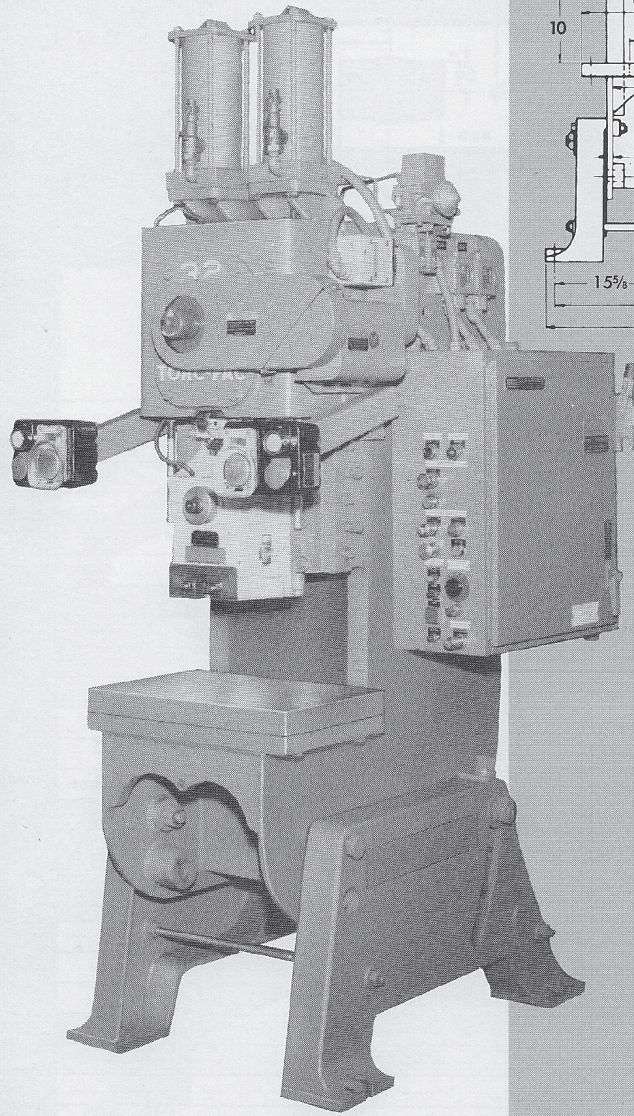
32-TON TORC-PAC PRESS SPECIFICATIONS

Capacity		32 tons
Shaft diameter	At main bearings	3" At Eccentric 6" (2" & 3" strokes), 8" (4" & 5" strokes)
Bolster Area	L RX FBX thickness	24" x 15" x 2 1/4"
Bed opening	LRXFB	11" x 8"
Width through back		14 1/2"
Depth of throat		8" standard 10 1/2" optional
	Height	81 3/8"; over counterbalance cylinder-96 3/4"
Basic overall dimensions (Std. frame)	Width	33 1/4"
	FB upright	44"
	FB inclined	62 3/4"
Strokes		3" std. 2" opt. 4" opt. 5" opt.
Shut height	Standard frame	10" std. 11" opt. 8 1/2" opt. 8" opt. Note: flanged ram reduces shut height by 3"
	Opt. high body	13" std. 14" opt. 11 1/2" opt. 11" opt. High body increases overall height
S.P.M.-Choice of one is standard		60, 70 to 90, 110, 130
S.P.M.-Optional		85 to 170, 100 to 117, 117 to 135, 135 to 152, 152 to 170
Slide adjustment		2 1/4"
Approximate weight-(Std. press)	Standard press	3,400#
Slide cap hole	Diameter	1-9/16" (maximum opt.-2 1/2") Depth 3"
Flywheel	Weight	335# Speed (min.) 462 R.P.M. @ 60 S.P.M.
Bolster drilling and special openings		Optional
Cushion stroke and tonnage	at 100 p.s.i opt.	2 1/2"-3 tons Optional
Flanged ram-with or without slide caps	LRXFB	Opt. 15" x 12"
	Reduces shut height	3"
Main motor	HP & RPM	5 HP-1800 R.P.M.



Member of the Schuler Group

32 Ton Torc-Pac O.B.I. specifications



TRUE CAPACITY CURVE

