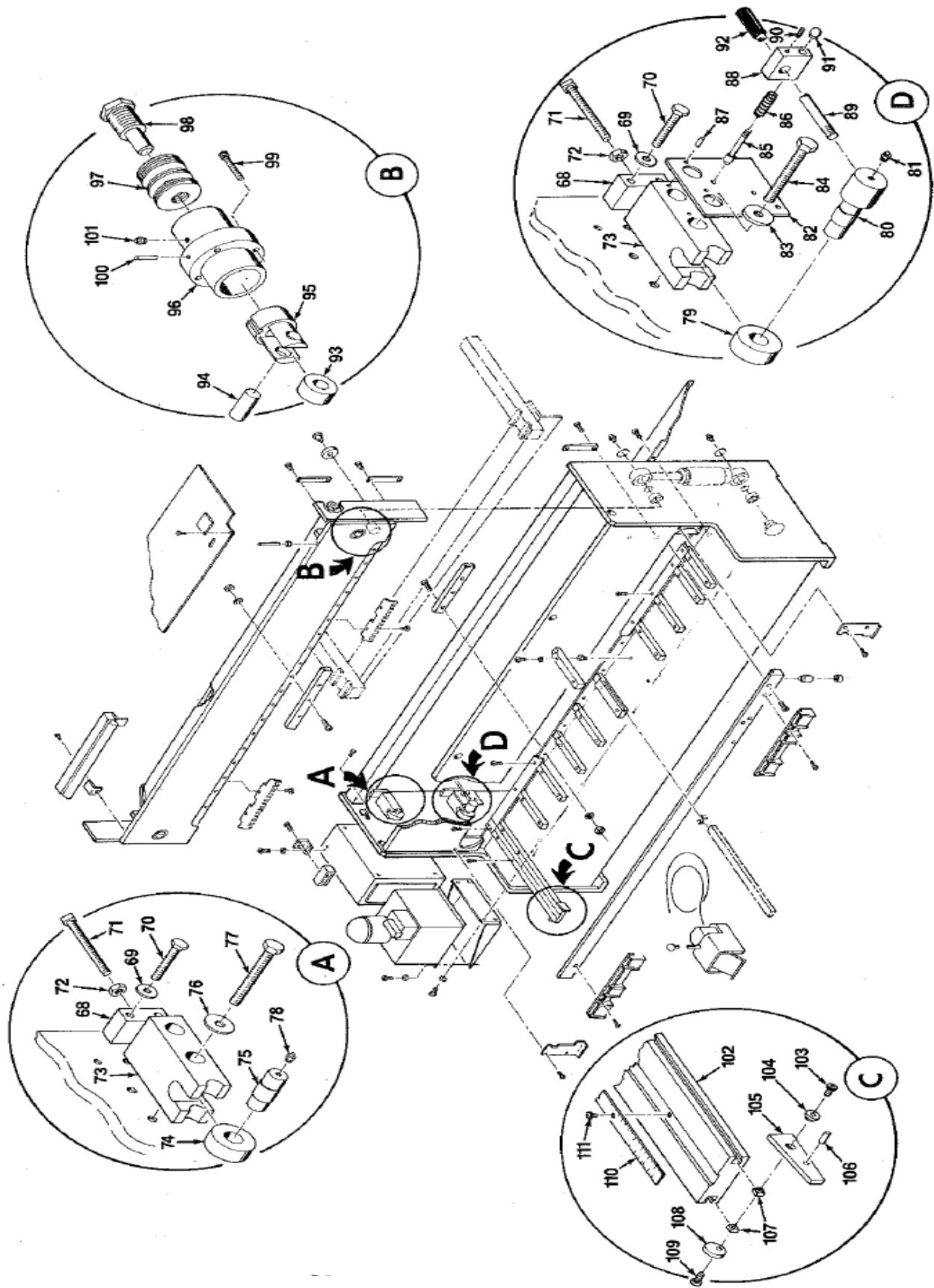


FRAME

- | | |
|--|---|
| 1. Ram | 36. Motor Controller |
| 2. Light Bracket | 37. Hydraulic Power Unit |
| 3. Light Fixture | 38. Mounting Screw |
| 4. Screw | 39. Washer |
| 5. Top Cover (specify L.H. or R.H.) | 40. Reservoir Bracket |
| 6. Top Hole Cover | 41. Bed Cover Screw |
| 7. Screw | 42. End Bed Cover |
| 8. Rear Gib | 43. L.H. Bed Cover |
| 9. Rear Gib Mounting Screw | 44. R.H. Bed Cover |
| 10. End Roller Shoulder Screw | 45. Mounting Screw |
| 11. End Roller | 46. Washer |
| 12. Ram Position Indicator | 47. Single Bed Rail |
| 13. Hex Nut | 48. Bed Rail Adjusting Screw |
| 14. Moving Blade | 49. Double Bed Rail |
| 15. Reverse Key Plow Bolt | 50. Front Gib |
| 16. Washer | 51. Front Gib Mounting Screw |
| 17. Hex Nut | 52. Rear Chute |
| 18. L.H. Knife Guard | 53. Chute Mounting Screw |
| 19. Knife Guard Mounting Screw | 54. R.H. Main Cylinder |
| 20. R.H. Knife Guard | 55. L.H. Main Cylinder (not shown) |
| 21. Brace Rod | 56. Frame |
| 22. Brace Rod Nut | 57. R.H. End Cover |
| 23. Backage (see separate part list) | 58. End Cover Screw |
| 24. Counter Bracket Mounting Screw | 59. Holddown Cylinder |
| 25. Washer | 60. Holddown Cylinder Footcups |
| 26. Counter Bracket | 61. Holddown Bar |
| 27. Counter | 62. Holddown Bar Mounting Screw |
| 28. Counter Mounting Screw | 63. R.H. Holddown Guard |
| 29. Micro Limit Switch
(specify L.H., R.H., Upper or Lower) | 64. Holddown Guard Mounting Screw |
| 30. Limit Switch Mounting Screw | 65. L.H. Holddown Guard |
| 31. Fixed Blade | 66. L.H. End Cover |
| 32. Spherical Bearing | 67. Front Bracket and 'T' Slot Nut (optional) |
| 33. Bearing Retaining Ring | 112. Foot Switch |
| 34. Cylinder Retaining Ring | 113. Fluorescent Light |
| 35. Lubrication Fitting | 114. Fluorescent Tube Safety Shields |
| | 115. O-Ring |



FRAME DETAILS

- | | |
|---|-------------------------------|
| 68. Ram Adjustment Stop | 90. Socket Set Screw |
| 69. Washer | 91. Knob |
| 70. Adjustment Stop Mounting Screw | 92. Hand Grip |
| 71. Square Head Set Screw | 93. Yoke Track Roller |
| 72. Hex Jam Nut | 94. Spring Pot Pin |
| 73. Ram Adjustment Block (specify L.H. or R.H.) | 95. Spring Pot Piston |
| 74. Yoke Track Roller | 96. Spring Pot Cylinder |
| 75. Ram Adjustment Pivot | 97. Disc Spring Washers |
| 76. Washer | 98. Spring Pot Screw |
| 77. Adjustment Block Mounting Screw | 99. Spring Pot Mounting Screw |
| 78. Lubrication Fitting | 100. Roll Pin |
| 79. Yoke Track Roller | 101. Lubrication Fitting |
| 80. Blade Adjustment Pivot | 102. Side Gage Bar |
| 81. Lubrication Fitting | 103. Cap Screw |
| 82. Blade Adjustment Plate | 104. Disappearing Stop Washer |
| 83. Washer | 105. Disappearing Stop |
| 84. Adjustment Plate Mounting Screw | 106. Roll Pin |
| 85. Blade Adjustment Pin | 107. T' Slot Nut |
| 86. Blade Adjustment Spring | 108. Side Gage Washer |
| 87. Roll Pin | 109. Cap Screw |
| 88. Blade Adjustment Bar | 110. Scale |
| 89. Blade Adjustment Handle | 111. Screw |

BACKGAGE ROUND BRACKET MODELS



1. Ram (reference)
2. Backgage Mounting Bolt
3. Chain
4. Backgage Bar

DETAIL A - BRACKET

5. Washer (specify L.H. or R.H.)
6. Stud
7. Hex Nut
8. Backgage Mounting Plate
9. Washer

10. Backgage Mounting Plate Screw
11. Slide Spacer
12. Front Sprocket
13. Roll Pin
14. Set Screw
15. Front End Cap
16. Front End Cap Mounting Screw
17. Bearing
18. Retaining Ring
19. Slide Nut
20. Felt Oil Wick
21. R.H. Screw
22. Disc Spring Washers
23. Thrust Bearing
24. R.H. Backgage Bracket
25. Oil Hole Cover
26. Cover Screw
27. Lubrication Plate
28. Face Adjustment Plate

29. Top End Cap Screw
30. Bottom End Cap Screw
31. Rear End Cap
32. Bearing
33. Calibration Plate
34. Adjusting Nut
35. Face Adjustment Pointer
36. Screw
37. Hex Nut

DETAIL B - DRIVE

38. L.H. Screw
39. L.H. Backgage Bracket
40. Lock Washer
41. Lock Nut
42. Bracket Sprocket
43. Set Screw
44. Roll Pin
45. Chain
46. Chain Guard
47. Guard Mounting Screw
48. Motor Sprocket
49. Set Screw
50. Key
51. Motor and 'L' Bracket
52. Motor Bracket Mounting Screw
53. Countershaft Sprocket
54. Set Screw
55. Roll Pin

56. Bushing
57. Sprocket Shaft
58. Flexible Shaft

DETAIL C - BACKGAGE BAR STRAIGHTNESS ADJUSTMENT

59. Stud
60. Hex Nut

DETAIL D - IDLER BRACKET, MODEL SP-10¹/₄

61. Idler Bracket
62. Bracket Mounting Screw
63. Set Screw Holder
64. Holder Mounting Screw
65. Set Screw
66. Sprocket Holder
67. Bushing
68. Sprocket
69. Sprocket Mounting Screw
70. Sprocket Holder Mounting Screw

DETAIL E - IDLER BRACKET, MODEL SP-10 GAUGE

71. Idler Bracket
72. Bracket Mounting Screw
73. Bushing
74. Sprocket
75. Sprocket Mounting Screw
76. Hex Nut
77. Hex Nut
78. Screw