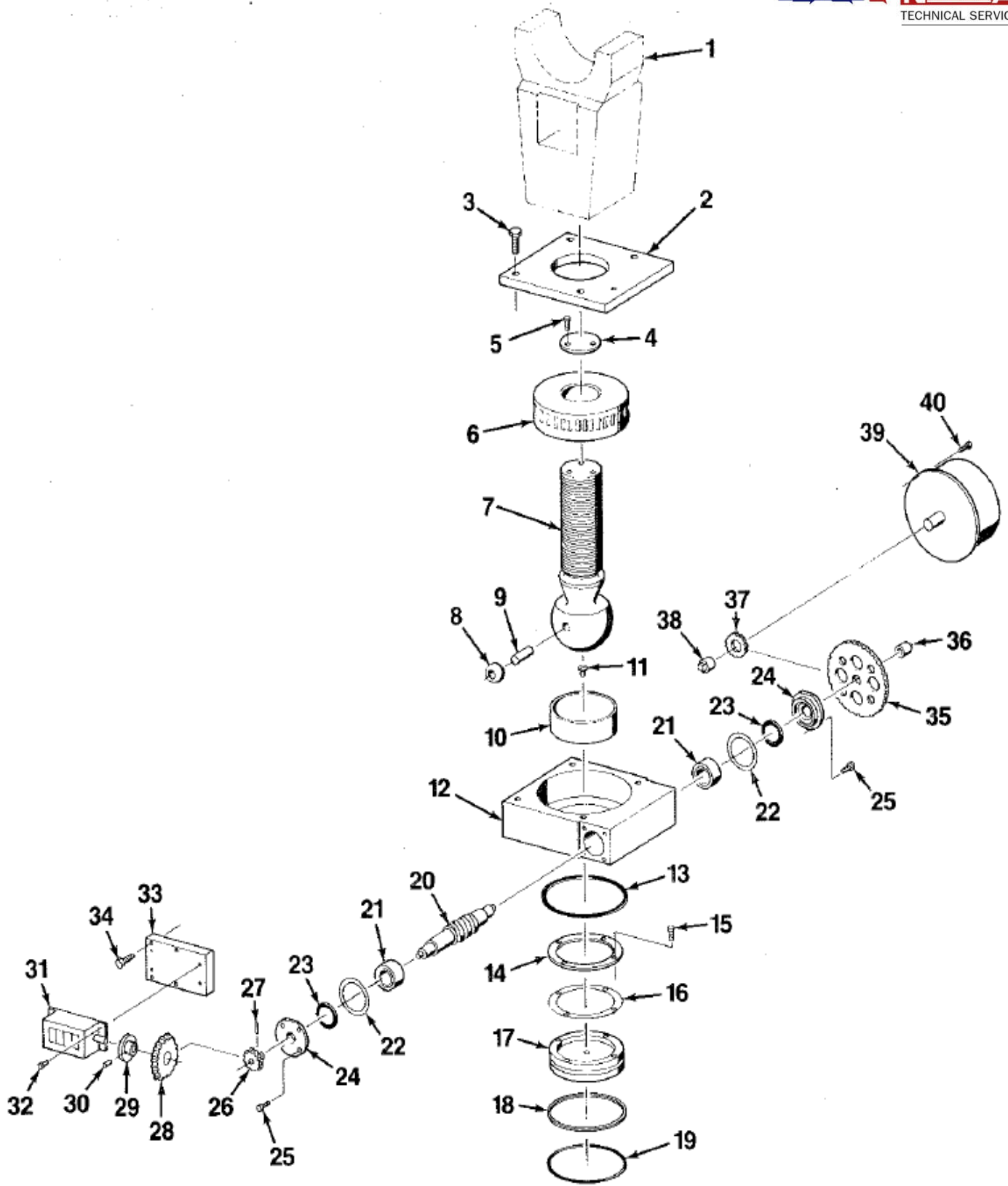


## FRAME ASSEMBLY



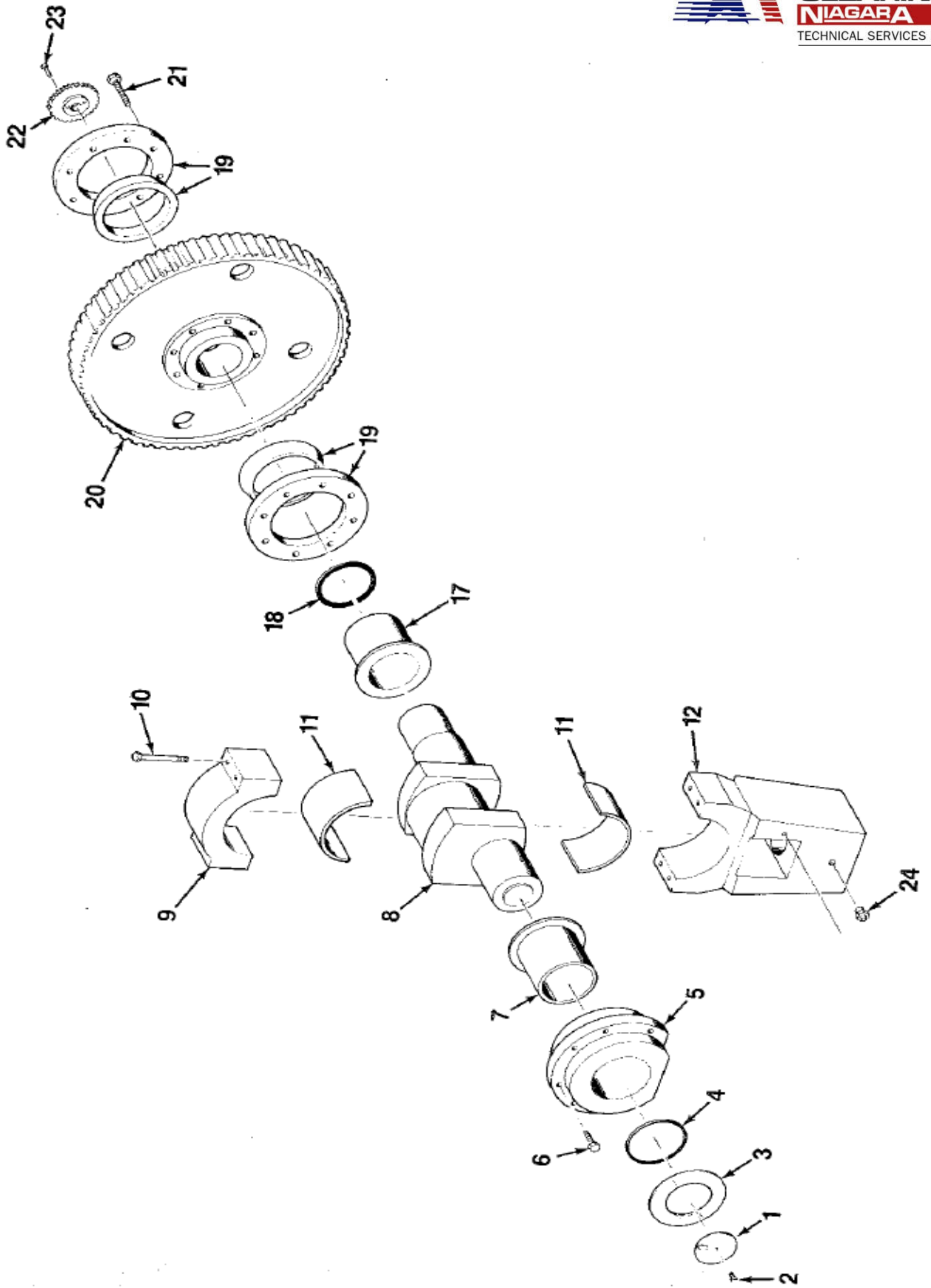
- |     |   |     |   |
|-----|---|-----|---|
| 1.  | Frame   | 31. | Screw                                   |
| 2.  | Bolster Plate   | 32. | Hex Nut                                 |
| 3.  | Screw   | 33. | Cotter Pin                              |
| 4.  | Slide   | 34. | Gear Box Cover                          |
| 5.  | Ram Adjustment Assembly (See Separate Part List)      | 35. | Screw                                   |
| 6.  | Slide Cover   | 36. | Limit Switch Mount Plate                |
| 7.  | Screw   | 37. | Screw                                   |
| 8.  | Overload Manifold                                     | 38. | Limit Switch                            |
| 9.  | Screw   | 39. | Screw                                   |
| 10. | Overload Protector                                    | 40. | Sprocket                                |
| 11. | Screw   | 41. | Key                                     |
| 12. | Counter Balance Bracket                               | 42. | Snap Ring                               |
| 13. | Screw   | 43. | Guard                                   |
| 14. | Release Valve Manifold                                | 44. | Screw                                   |
| 15. | Release Valve   | 45. | Chain                                   |
| 16. | Frame Gib   | 46. | Air Tank                                |
| 17. | Screw   | 47. | Tank Bracket & Rod                      |
| 18. | Frame Gib Sim   | 48. | Motor Slide Base                        |
| 19. | Slide Liner (Front & Rear)                            | 49. | Screw                                   |
| 20. | Screw   | 50. | Motor                                   |
| 21. | Side Slide Liner                                      | 51. | Drive Assembly (See Separate Part List) |
| 22. | Side Slide Liner Backing Plate                        | 52. | Rear Cover With Hinges                  |
| 23. | Lock Jam Nut  | 53. | Screw                                   |
| 24. | Push Screw  | 54. | Wire Cover                              |
| 25. | Pull Screw  | 55. | Screw                                   |
| 26. | Crankshaft/Maingear Assembly (See Separate Part List) | 56. | Control Enclosure                       |
| 27. | Air Control Assembly                                  | 57. | Control Enclosure Bracket               |
| 28. | Screw   | 58. | Shock Mount                             |
| 29. | Counter Balance Cylinder                              | 59. | Screw                                   |
| 30. | Spacer  | 60. | Screw                                   |



## SLIDE ADJUSTMENT ASSEMBLY

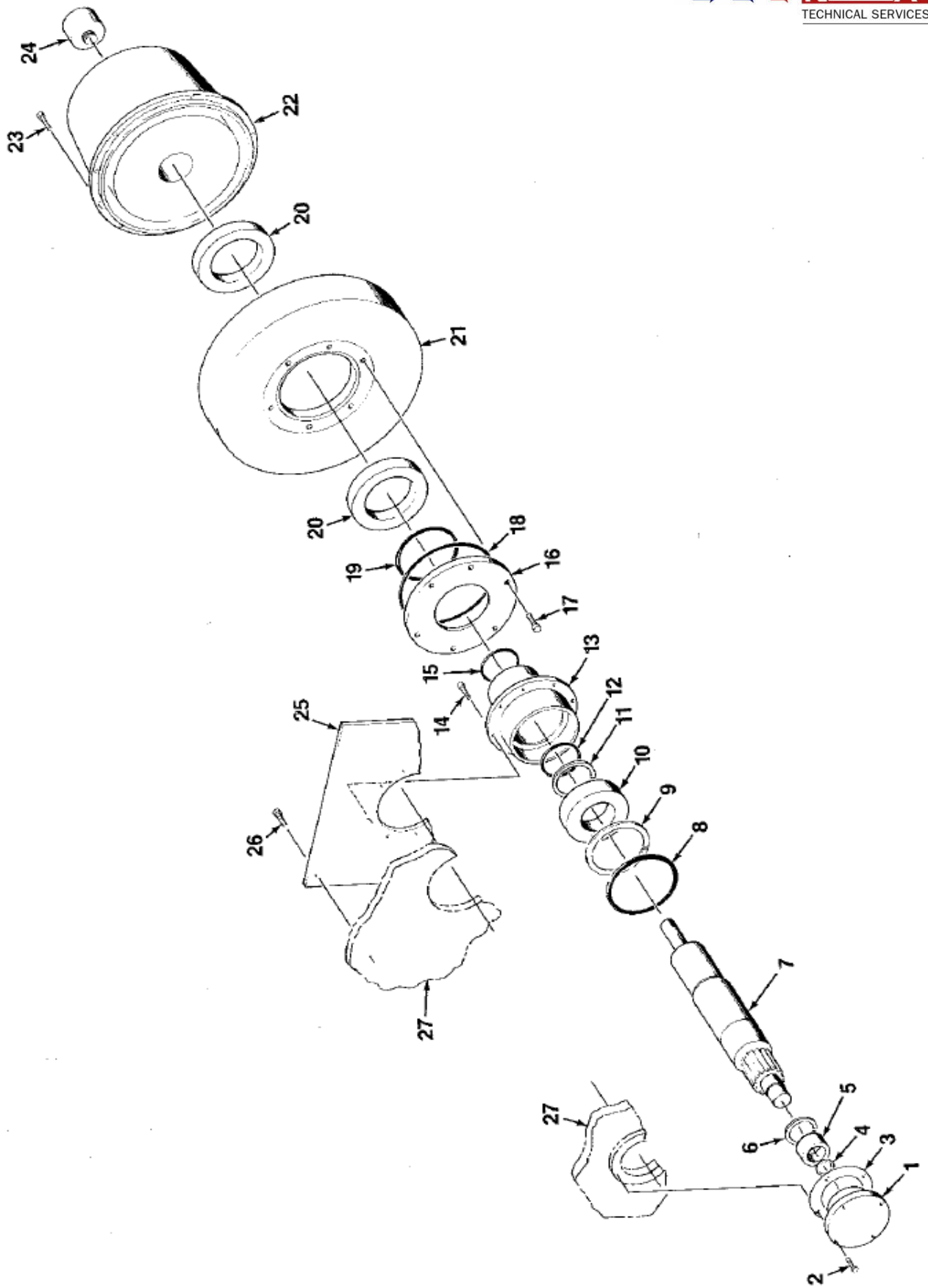


1. Connection (Ref)
2. Worm Wheel Retainer
3. Screw
4. Adjusting Screw Cap
5. Screw
6. Worm Wheel
7. Ball Screw
8. Spherical Bearing
9. Pin
10. Ball Seat
11. Pan Head Screw
12. Worm Wheel Enclosure
13. 'O' Ring
14. Spacer
15. Screw
16. Shim
17. Piston
18. Back Up Ring
19. 'O' Ring
20. Worm Shaft
21. Bearing
22. Shim
23. Seal
24. Bearing Cover
25. Screw
26. Bevel Gear
27. Roll Pin
28. Bevel Gear
29. Flanged Bushing
30. Roll Pin
31. Counter
32. Screw
33. Counter Spacer
34. Screw
35. Slide Adjustment Gear
36. Gear Mount
37. Pinion
38. Gear Mount
39. Motor
40. Screw



## CRANKSHAFT/MAIN GEAR ASSEMBLY

- |     |                            |     |                           |
|-----|----------------------------|-----|---------------------------|
| 1.  | Stroke Indicator Plate     | 17. | Rear Main Bearing Bushing |
| 2.  | Screw                      | 18. | Seal                      |
| 3.  | Stroke Indicator Backplate | 19. | Split Shrink Disc         |
| 4.  | Seal                       | 20. | Main Gear                 |
| 5.  | Front Bearing Housing      | 21. | Screw                     |
| 6.  | Screw                      | 22. | Crankshaft Sprocket       |
| 7.  | Front Main Bearing Bushing | 23. | Screw                     |
| 8.  | Crankshaft                 | 24. | Grease Fitting            |
| 9.  | Connection Cap             |     |                           |
| 10. | Bolt                       |     |                           |
| 11. | Connection Bushing         |     |                           |
| 12. | Connection                 |     |                           |



## DRIVE ASSEMBLY



- |     |                            |     |                             |
|-----|----------------------------|-----|-----------------------------|
| 1.  | Driveshaft Front Cartridge | 15. | O-Ring                      |
| 2.  | Screw                      | 16. | Quill Seal Cartridge        |
| 3.  | Gasket                     | 17. | Screw                       |
| 4.  | Snap Ring                  | 18. | O-Ring                      |
| 5.  | Bearing                    | 19. | Seal                        |
| 6.  | Snap Ring                  | 20. | Bearing                     |
| 7.  | Driveshaft                 | 21. | Flywheel                    |
| 8.  | O-Ring                     | 22. | Clutch-Brake                |
| 9.  | Snap Ring                  | 23. | Screw                       |
| 10. | Bearing                    | 24. | Rotary Union                |
| 11. | Snap Ring                  | 25. | Quill Plate                 |
| 12. | Seal                       | 26. | Screw                       |
| 13. | Quill                      | 27. | Frame/Gearbox Housing (Ref) |
| 14. | Screw                      |     |                             |